



STORE

## Data Sheet CODESYS Profibus Master (for EL6731) SL

CODESYS Profibus Master (for EL6731) SL is a product that allows end users to integrate their devices as a Profibus master into a Profibus network.

### Product description

The EL6731 gateway terminal from Beckhoff allows an EtherCAT enabled controller to register itself as a Profibus master in a Profibus network. For this purpose, a specific CODESYS compatible controller with EtherCAT fieldbus support is licensed accordingly. This product allows the integration of the terminal into an EtherCAT tree and the configuration directly from within the CODESYS Development System. For CODESYS compatible controllers to use this functionality, they require the EL6731 Profibus master gateway. End users of CODESYS compatible controllers with EtherCAT are provided with the option for configuring their device as a Profibus master and integrating it into existing Profibus architectures.

### More information

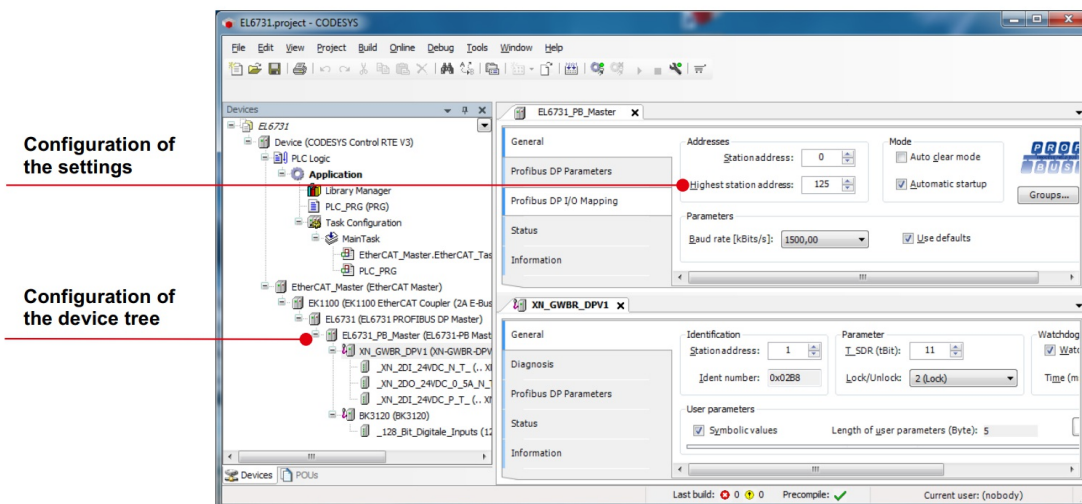
A special device description for the EL6731 gateway terminal allows integration into an appropriate EtherCAT fieldbus coupler (example: EK1100) of the CODESYS project according to the physical configuration.

### Architecture

Typical structure of the configuration:

| - fieldbus coupler (example: EK1100)

| - EL6731 | | - transition to Profibus | | - Profibus slave | | - Profibus I/O modules | - Any other EtherCAT I/O modules



Picture 1: Example of the configuration dialog for the EL6731 configurator

## General information

### Manufacturer:

3S-Smart Software Solutions GmbH  
 Memminger Strasse 151  
 87439 Kempten  
 Germany

### Support:

<https://support.codesys.com>

### Item:

CODESYS Profibus Master (for EL6731) SL

### Item number:

2303000012

### Sales:

CODESYS Store

<https://store.codesys.com>

### Included in delivery:

- License key

## System requirements and restrictions

|                                     |  |
|-------------------------------------|--|
| <b>Programming System</b>           | CODESYS Development System V3.5.4.0 or higher  |
| <b>Runtime System</b>               | CODESYS Control V3.5.4.0 or higher   |
| <b>Supported Platforms/ Devices</b> | Note: Use the project "Device Reader" to find out the supported features of your device. "Device Reader" is available for free in the CODESYS Store. |
| <b>Additional Requirements</b>      | <ul style="list-style-type: none"> <li>• Available EtherCAT Master and Ethernet port on the device</li> <li>• WIBU Codemeter support</li> </ul>      |
| <b>Restrictions</b>                 | -  |
| <b>Licensing</b>                    | License activation optional on CODESYS Runtime Key or CODESYS Soft Key (free of charge component of CODESYS Controls)                                |
| <b>Required Accessories</b>         | <ul style="list-style-type: none"> <li>• PROFIBUS master terminal EL6731 (Beckhoff)</li> <li>• Optional: CODESYS Runtime Key</li> </ul>              |

*Note: Not all CODESYS features are available in all territories. For more information on geographic restrictions, please contact [sales@codesys.com](mailto:sales@codesys.com).*

*Note: Technical specifications are subject to change. Errors and omissions excepted. The content of the current online version of this document applies.*