



## Data Sheet CODESYS Security Agent

The feature „CODESYS Security Agent“ is designed to configure and control security-related issues in a CODESYS environment. The Addon is available in the CODESYS Store and will be extended stepwise in future versions.

### Product description

#### Licensing:

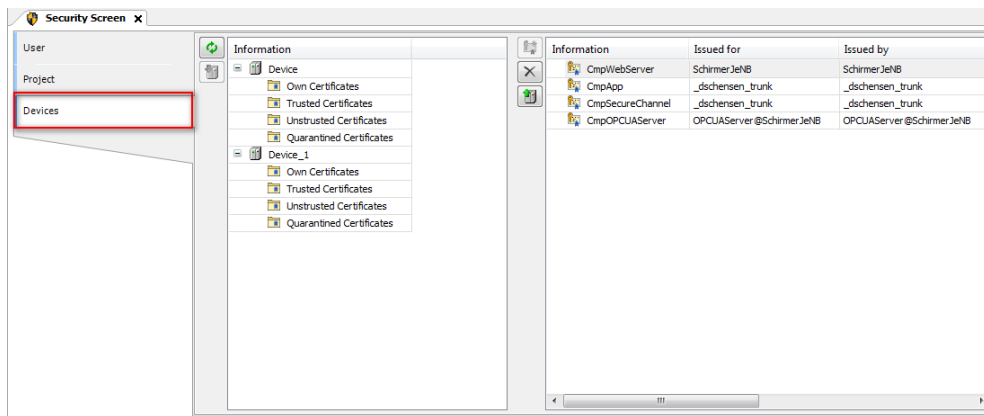
No license is required.



CODESYS Security Agent offers an operator different security-related functions. It extends the Security Screen in the CODESYS Development System.

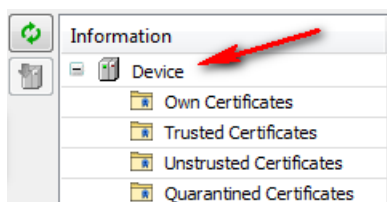
### Features

**Configure the certificates of a PLC.** The existing view „Security Screen“ is extended by a new tab “Devices”, which offers the possibility to configure the certificates of a PLC within the current project. This tab shows a list of all available PLCs and their certificate store (left list), as well as the stored certificates (right list):

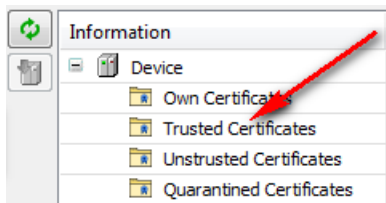


The following functionality mapped by the UI:

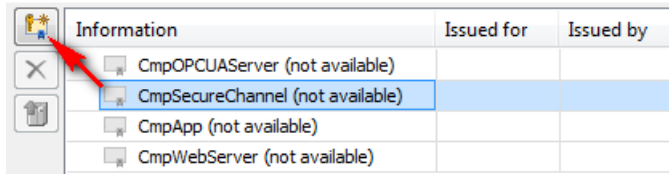
- Show all available devices and their certificate store by clicking the „Refresh“-button.
- Show all use cases which provide use of certificates. This is done by selecting a „Device“-node in the left list. The visual display is takes place in the right list.



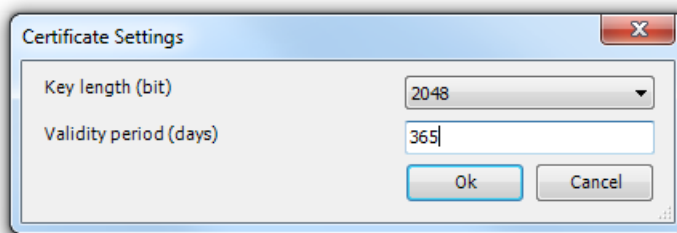
- Show all available certificates of a certificate store. This is done by selecting one of the „Store“-nodes in the left list. The visual display takes place in the right list.



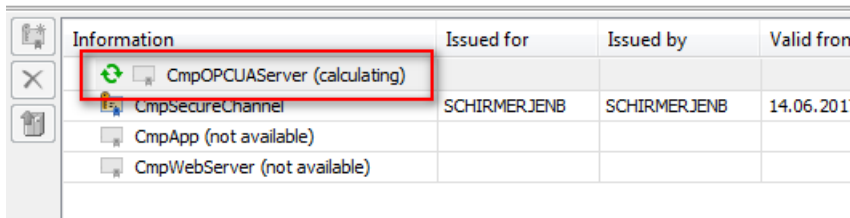
- On clicking the „Download“-button, a local certificate can be selected and downloaded to the PLC.
- On clicking the „New Certificate“-button a new certificate can be calculated for a certain use case.



- If the user triggers this, a dialog is prompted to choose the key length and the validity period of the certificate to be calculated. The chosen values are stored in the user-options and will be reloaded with the next operation.



- While a certificate is being calculated on the PLC, an animation shows the user the ongoing process. It is not possible to cancel this operation, but the user can close the „Security Screen“ during the calculation in order to continue working on other parts of the project.



- If a certificate is selected in the right list, it can be deleted, or uploaded to the local PC. Drag'n'Drop is also possible. On double clicking a certificate the windows dialog is used to show all information of the certificate.

## General information

**Supplier:**

CODESYS GmbH  
 Memminger Strasse 151  
 87439 Kempten  
 Germany

**Support:**

<https://support.codesys.com>

**Item:**

CODESYS Security Agent

**Item number:**

000093

**Sales / Source of supply:**


CODESYS Store

<https://store.codesys.com>

**Included in delivery:**

- Package for the CODESYS Development System including license agreement and online help

## System requirements and restrictions

<b>Programming System</b>	CODESYS Development System V3.5.14.0
<b>Runtime System</b>	CODESYS Control V3.5.14.0
<b>Supported Platforms/ Devices</b>	Note: The scope of the available security functions depends on the applied CODESYS Runtime System and may vary.
<b>Additional Requirements</b>	-
<b>Restrictions</b>	-
<b>Licensing</b>	<div style="text-align: center;">   <b>NO LICENSE</b> </div> <p>No license is required.</p>
<b>Required Accessories</b>	-

*Note: Not all CODESYS features are available in all territories. For more information on geographic restrictions, please contact [sales@codesys.com](mailto:sales@codesys.com).*

*Note: Technical specifications are subject to change. Errors and omissions excepted. The content of the current online version of this document applies.*