

2-Axis MnJoystick

General information

Product Id: 000056	Supplier exceet electronics AG Riedstrasse 1 6343 Rotkreuz Schweiz Phone: +41 41 799 47 99 Support: http://www.exceet-electronics.com/kontakt/
Version: 1.0.0.0	
Short description The 2-Axis MnJoystick is a visualisation element and can be used to control movements in two dimensions.	

System requirements and restrictions

Programming system	CODESYS Development System Version 3.5.4.0 or higher
Runtime System	CODESYS Control Version 3.5.4.0
Supported Operating Systems	Notice: Use the project 'Device Reader' to find out the supported features of your device. 'Device Reader' is available for free in the CODESYS Store.
Additional Requirements	none
Restrictions	none

Price

This example is for free

Product description

2-Axis MnJoystick is a visualisation element which is located in the Visu ToolBox under "MnControls Light".

This joystick can be used to control movements in two dimensions.

Functional description

The joystick lever can be dragged within a given radius and returns following values:

X Value -> Deviation in the X direction from the center (-100 to 100, rest position = 0)

Y Value -> Deviation in the Y direction from the center (-100 to 100, rest position = 0)

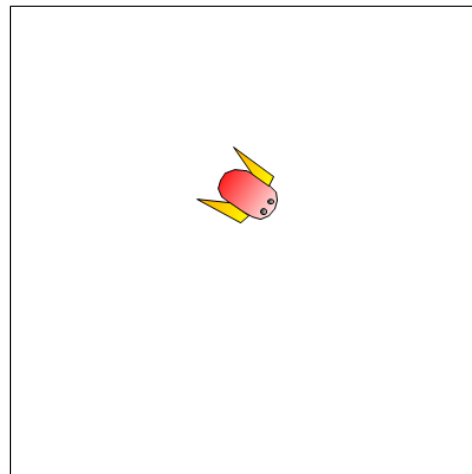
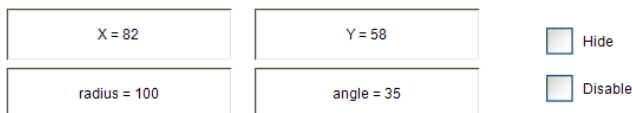
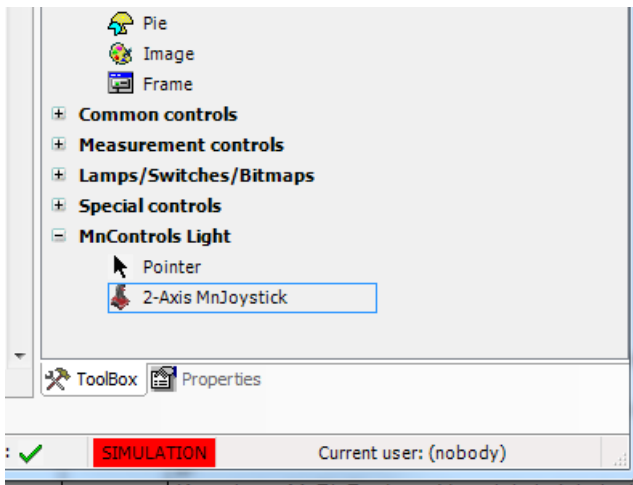
Angle Value -> Angle to center (0 - 360 degree)

Radius Value -> Deviation from center (0 - 100)

History of versions:

Initial Version: 1.0.0.0

Screenshots



alization Build Online Debug Tools Window Help

Visualization x Library Manager Target-Visi

Win V3)

iger
JN)
G)
ration
k
_PRG
SK
Elems. Visu_Prg
Manager
isualisierung
ualisierung

Properties

Filter Sort by Sort order Expert

Property	Value
Elementname	GenElemInst_25
Type of element	2-Axis MnJoystick
Position	
X	45
Y	528
Width	295
Height	233
Background Image	
Transparent	<input type="checkbox"/>
Transparent color	Black
Scale Type	Anisotropic
X Value	
Variable	PLC_PRG.ix
Y Value	
Variable	PLC_PRG.iy
Radius Value	
Variable	PLC_PRG.iradius
Angle Value	
Variable	PLC_PRG.iangle
RadiusInElement	50
DropMouseOnLeave	<input type="checkbox"/>
Overlay Icon	
Image Up	
Image Down	
Image Disabled	
Transparent	<input type="checkbox"/>
Transparent color	Black
Scale Type	Isotropic
Position	
Width	140
Height	140
State variables	
Invisible	PLC_PRG.bHidden
Deactivate inputs	PLC_PRG.bDisabled

100 %

0 warning(s), 7 message(s)

X : 256, Y : 614 Last build: 0 0 Precompile: SIMULATION Current user: (nobody)